

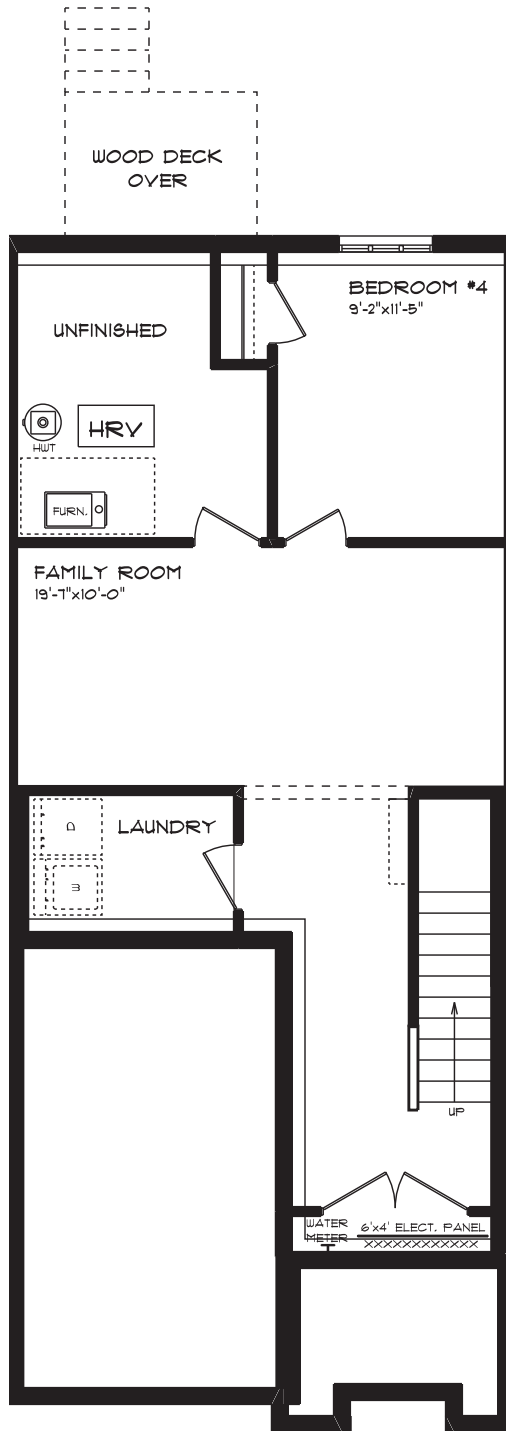


#9-20 TAMARACK COURT

FRONT ELEVATION 'B'
APPROX. 2,103 SQ. FT. TOTAL

This plan is the property of Hajjoe Homes and any reproduction of this plan, its concepts or ideas, is strictly prohibited. Plans and specifications are approximate and are subject to change without notice. Finished area and room dimensions will change depending on front elevation selection.

E. & O.E.

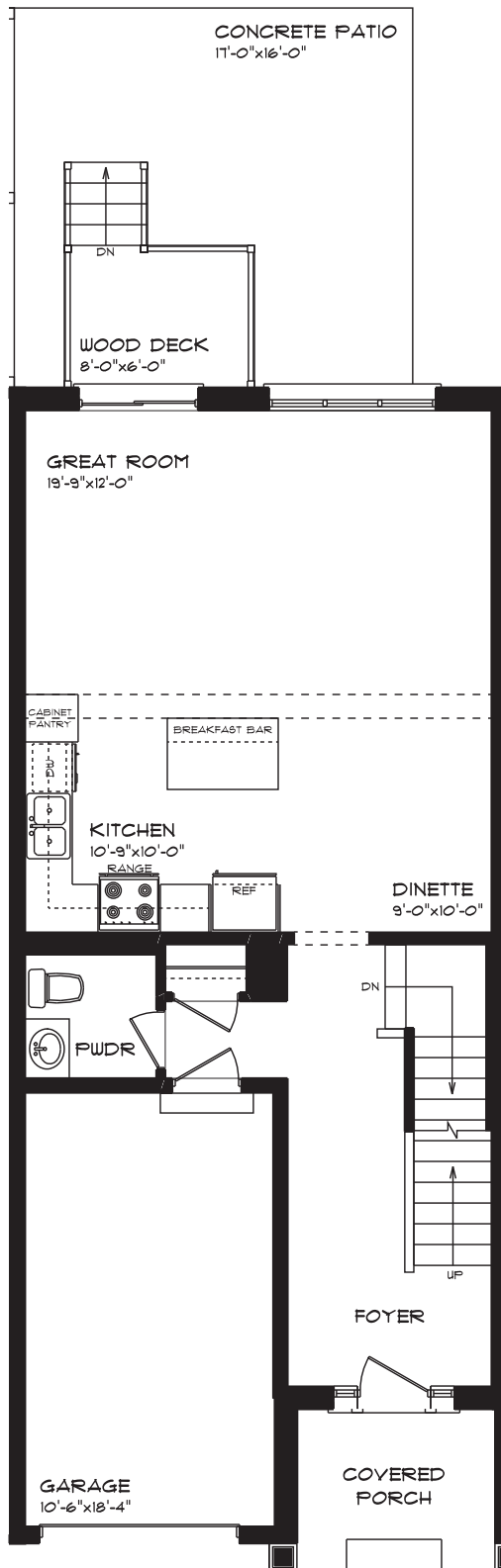


#9-20 TAMARACK COURT

LOWER LEVEL PLAN
 APPROX. 484 SQ. FT.

This plan is the property of Hayhoe Homes and any reproduction of this plan, its concepts or ideas, is strictly prohibited. Plans and specifications are approximate and are subject to change without notice. Finished area and room dimensions will change depending on front elevation selection.

E. & O.E.

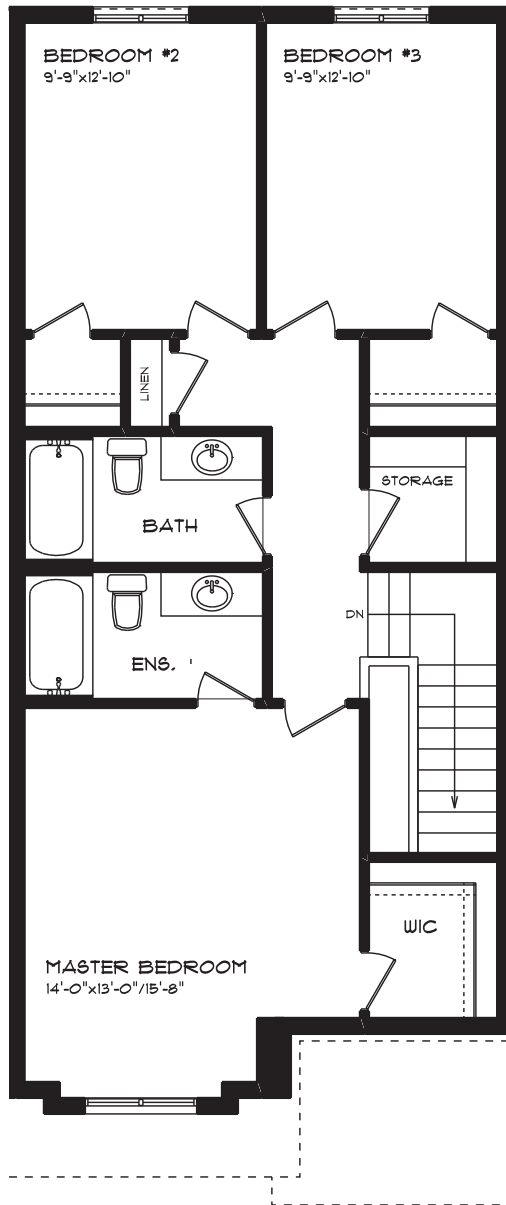


#9-20 TAMARACK COURT

MAIN FLOOR PLAN
APPROX. 155 SQ. FT.

This plan is the property of Hayhoe Homes and any reproduction of this plan, its concepts or ideas, is strictly prohibited. Plans and specifications are approximate and are subject to change without notice. Finished area and room dimensions will change depending on front elevation selection.

E. & O.E.



#9-20 TAMARACK COURT

**SECOND FLOOR PLAN
APPROX. 864 SQ. FT.**

This plan is the property of Hayhoe Homes and any reproduction of this plan, its concepts or ideas, is strictly prohibited. Plans and specifications are approximate and are subject to change without notice. Finished area and room dimensions will change depending on front elevation selection.

E. & O.E.