

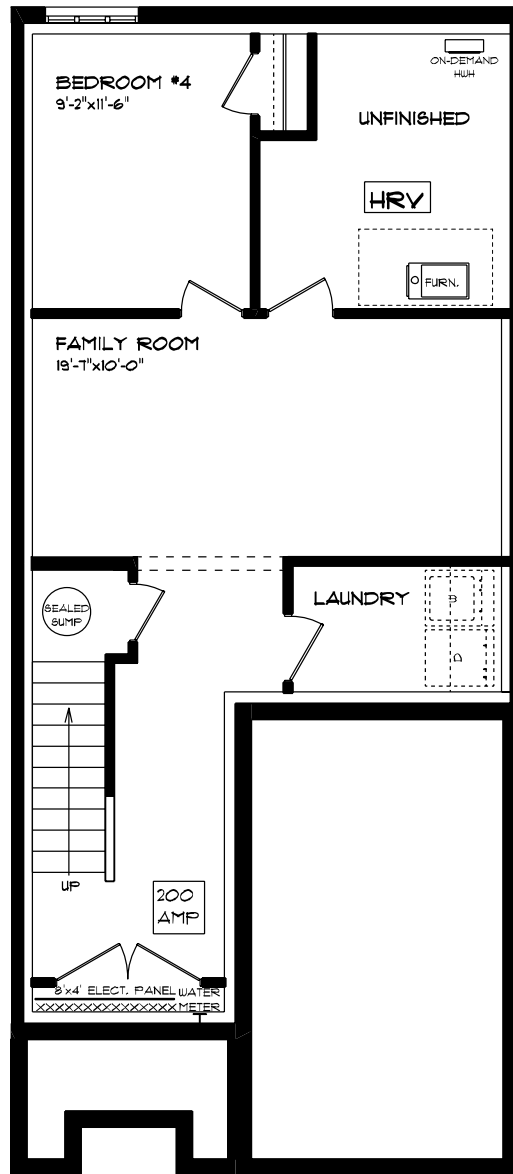


MUN. #30 - 76 CORTLAND TERRACE

FRONT ELEVATION
APPROX. 2,151 SQ. FT.

This plan is the property of Mayhew Homes and any reproduction of this plan, its concepts or ideas, is strictly prohibited. Plans and specifications are approximate and are subject to change without notice. Finished area and room dimensions will change depending on front elevation selection. Copyright: 2023.

E. & O.E.

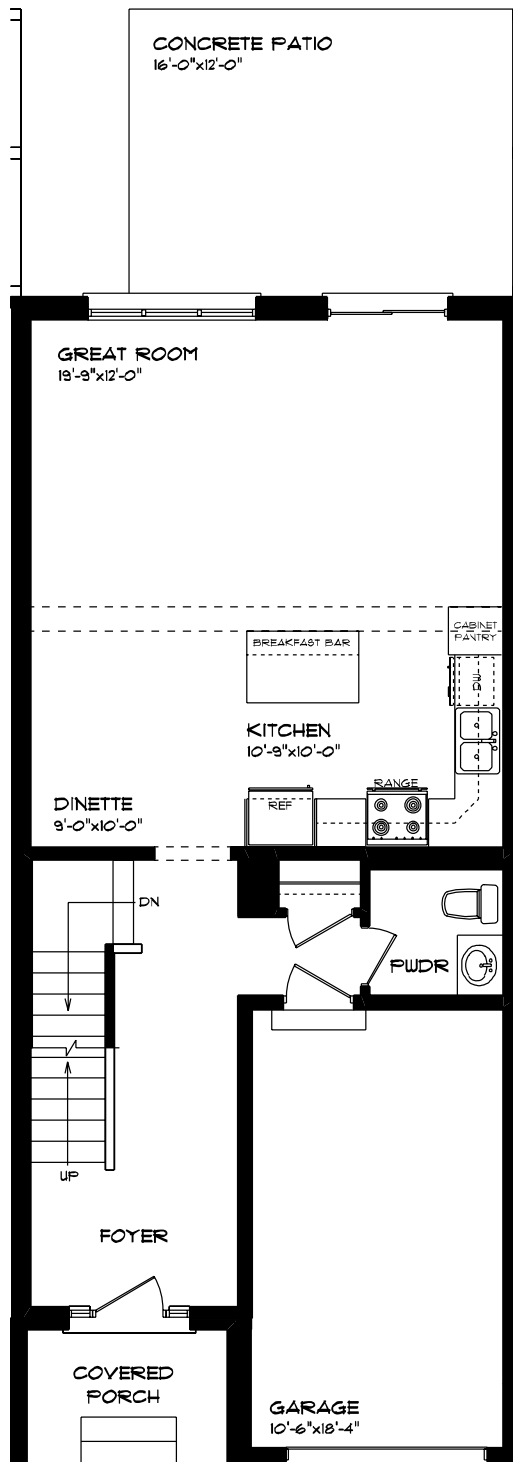


MUN. #30 - 76 CORTLAND TERRACE

LOWER LEVEL
APPROX. 536 SQ. FT.

This plan is the property of Hayhoe Homes and any reproduction of this plan, its concepts or ideas, is strictly prohibited. Plans and specifications are approximate and are subject to change without notice. Finished area and room dimensions will change depending on front elevation selection. Copyright 2023.

E. & O.E.

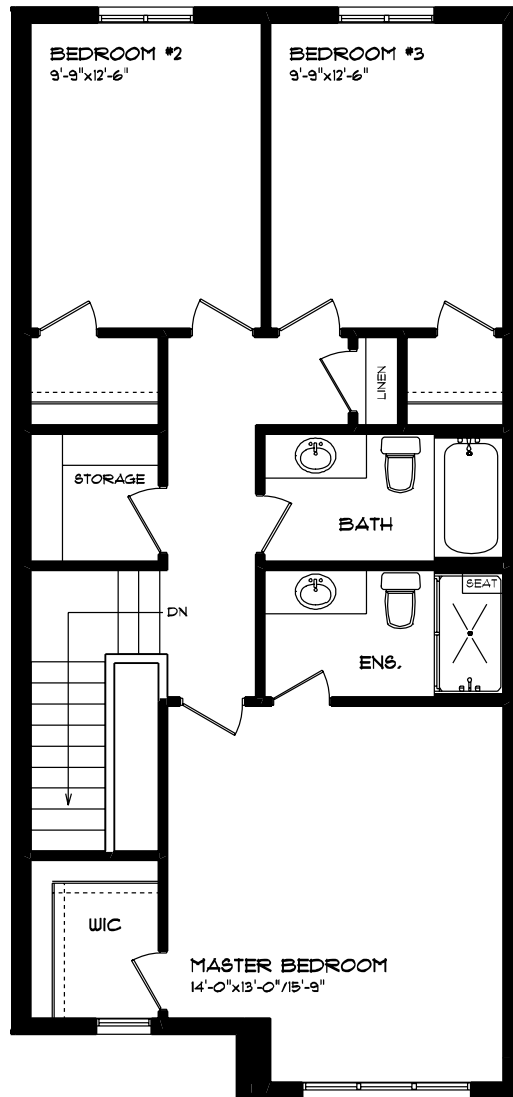


MUN. #30 - 16 CORTLAND TERRACE

MAIN FLOOR PLAN
APPROX. 155 SQ. FT.

This plan is the property of HAYHOLE HOMES and any reproduction of this plan, its concepts or ideas, is strictly prohibited. Plans and specifications are approximate and are subject to change without notice. Finished area and room dimensions will change depending on front elevation selection. Copyright 2023.

E. & O.E.



MUN. #30 - 76 CORTLAND TERRACE

**SECOND FLOOR PLAN
APPROX. 860 SQ. FT.**

This plan is the property of Hayscoe Homes and any reproduction of this plan, its concepts or ideas, is strictly prohibited. Plans and specifications are approximate and are subject to change without notice. Finished area and room dimensions will change depending on front elevation selection. Copyright: 2023.

E. & O.E.